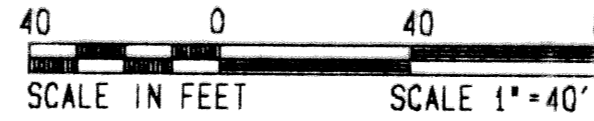


KENSINGTON AT WOODFIELD COUNTRY CLUB

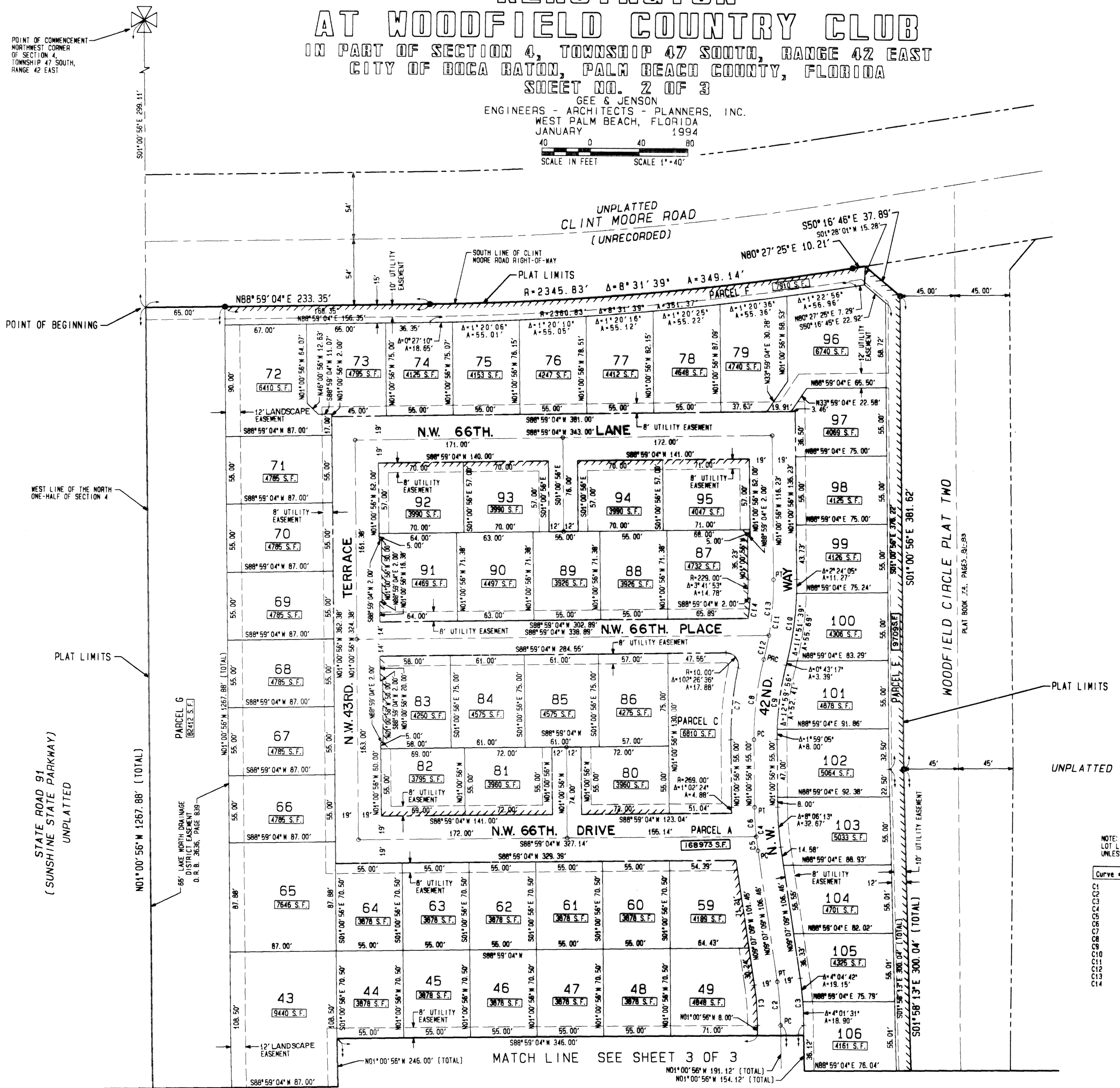
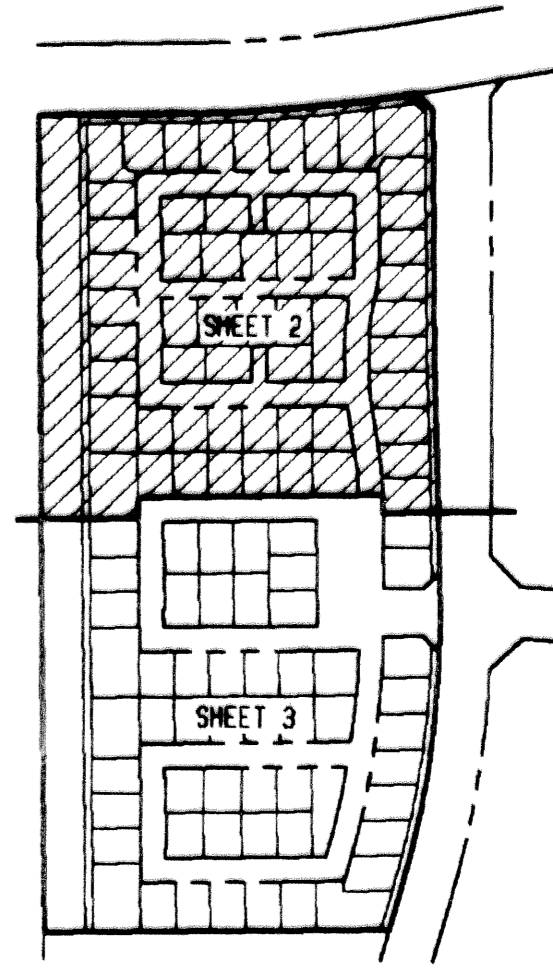
IN PART OF SECTION 4, TOWNSHIP 47 SOUTH, RANGE 42 EAST
CITY OF BOCA RATON, PALM BEACH COUNTY, FLORIDA
SHEET NO. 2 OF 3

GEE & JENSON
ENGINEERS - ARCHITECTS - PLANNERS, INC.
WEST PALM BEACH, FLORIDA
JANUARY 1994



155

STATE OF FLORIDA
COUNTY OF PALM BEACH
This plat was filed for
record at _____ M. this day
of _____ 1994, and duly
recorded in Plat Book No. _____
on Pages _____ thru _____
DOROTHY WILKEN
Clerk Circuit Court
By _____ D. C.



SCALE: 1" = 40'

NOTE: LOT LINES ARE NOT RADIAL UNLESS OTHERWISE NOTED.

Curve	Radius	Delta	Length	Tangent	Chord/Brg
C1	231.00'	8°06'13"	32.67'	16.36'	32.64'
C2	250.00'	8°06'13"	35.36'	17.71'	35.33'
C3	250.00'	9°06'13"	38.05'	19.05'	38.01'
C4	250.00'	9°06'13"	35.36'	17.71'	35.33'
C5	250.00'	2°37'18"	11.44'	5.72'	11.44'
C6	250.00'	5°28'55"	23.92'	11.97'	23.91'
C7	268.00'	12°28'38"	58.42'	29.33'	58.31'
C8	250.00'	14°59'01"	65.38'	32.68'	65.19'
C9	268.00'	14°59'01"	60.41'	30.38'	60.24'
C10	268.00'	14°59'01"	70.15'	35.38'	70.15'
C11	250.00'	14°59'01"	65.38'	32.68'	65.19'
C12	250.00'	4°34'41"	19.98'	9.98'	19.97'
C13	250.00'	10°24'20"	45.40'	22.76'	45.34'
C14	231.00'	4°05'05"	16.47'	8.24'	16.47'

SUBDIVISION Kensington at Woodfield
BOOK 73 PAGE 155
FLOOD ZONE FLOOD MAP
QUAD ZONING
SE
PUD NAME C/ROCA
4/27/94
ZIP CODE

COMPUTED D. BACHOR
DRAWN D. BACHOR
CHECKED
APPROVED
JOB NO. 93-330

FILE: PAR-1'P2 1-24-1994 7:11am